

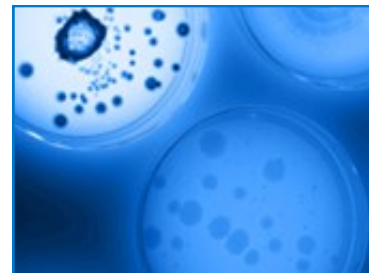
Commercial Foodservice Operations & Maintenance

DrainShot™ BIOLOGICAL DOSING SYSTEM



DrainShot offers a smart biological dosing system to remediate **drains, grease traps & lift stations - 24/7**. Biological treatment is a sustainable maintenance tool for fewer problems, cleaner wastewater & peace-of-mind.

DrainShot BioDOSER
delivers **sustainable** operation
with superior green **science**.



DrainShot automatically dispenses proprietary probiotic formulas to treat ORGANICS in wastewater. The active microbes breakdown **fats, oils, grease** and **sugars**; rendering them unable to reform or clog drains. All the treatments are bio-based, non-toxic, safe for plumbing and the environment with system refill from concentrate.

- **REMEDiates** organic waste build up with high count microbial action
- **PREVENTS** emergency drain line issues from **FOG & Sugar Snakes**
- **REDUCES** odors and noxious gases with counteractant technologies
- **EXTENDS** grease trap cleaning intervals from reduced grease loading
- **IMPROVES** FOG, TSS & BOD for cleaner **wastewater** effluent

DrainShot...*keeps your drains & grease trap flowing*



DrainShot™

Formula Specifications

Guaranteed Minimum Bacterial Concentration

2 Billion CFU/ml

PRODUCT PROFILE

Applications

- Grease traps / Interceptors
- Kitchen drains (grease)
- Beverage lines (sugars)
- Lift Stations
- Collection Systems

Multiple *Bacillus* Species

- Naturally occurring, non-engineered
- Aerobes and facultative anaerobes
- Highly motile
- Positive chemotaxis
- 100% stabilized bacterial spores

Bacterial Enzyme Production

Amylase, Protease, Lipase, Esterase, Urease, Cellulase, Xylanase

Appearance

Blue/Green & Orange Liquid Formulas

Effective pH Range

4.25 – 10.0

Effective Temperature Range

5°C – 55°C (40°F – 130°F)

Shelf Life

One year at 21°C (70°F)

STANDARD PACKAGING

Available in 10X Conc:

1L | 32 oz - Concentrate

*add water for RTU mix



Refill Pouch Concentrate

FOG & SUGAR FORMULAS

STORAGE AND HANDLING

Store in a cool, dry location.

Do not freeze

Wash thoroughly with water if exposed to skin or eyes

FORMULATION GUIDELINES (Liquid)

Mix thoroughly prior to dosing. To refill system, disconnect 10L reservoir from tubing. Add water to reservoir first (about 2/3rd's full) THEN add bio treatment concentrate. Swirl to mix.



Portable Size: 24"L x 12"H x 12"W

DrainShot operates with proprietary bio treatments to target multiple waste streams. Kit includes: **dosing pump, reservoir, fittings & tubing.**

EarthBio - proprietary bio-treatment formulas:

FOG | Drain Line & Grease Trap Treatment - **fats, oils & grease**

SUGAR | Bar Drain & Beverage Line Treatment - **sugars, soda & syrups**



Consult your **EarthBio** technical representative for dosing directions or additional information: 888.855.1925 or info@earthbio.com

© 2025 Ecotek, LLC. All Rights Reserved.

*No part of this document may be used to support the sales or distribution of products not supplied by EarthBio