

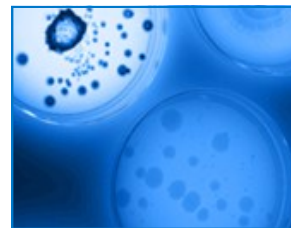
GreaseShot™

BIO-DOSE DRAIN REMEDIATION

GreaseShot is the first fully automated drain dosing system that is self-service simple for commercial food operators. The wall mounted system delivers safe bio remediation for fewer clogs, less odor, and cleaner wastewater.

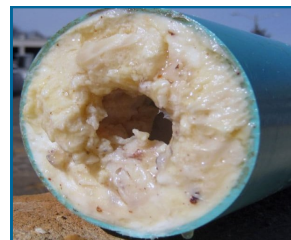


GreaseShot Auto-Dose delivers a multi-strain microbial FOG treatment with easy refill via high-count **bio concentrate** pouch.



EASY 1-2-3 Drain Maintenance.

GreaseShot bio is a proprietary probiotic formula to treat ORGANICS in wastewater. The active microbes breakdown **fats, oils, grease** and **sugars** (FOGS); rendering them unable to reform or clog drains. All formulas are bio-based, non-toxic, safe for plumbing and the environment. Also, refilling with liquid bio concentrate is significantly **less** to ship, store & handle.

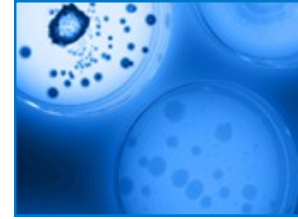


- **REMEDiates** organic waste build up with high count microbial action
- **PREVENTS** emergency drain problems from **FOG & Sugar** build up
- **REDUCES** odors and noxious gases with counteractant biotechnology
- **EXTENDS** grease trap cleaning intervals from reduced grease loading
- **IMPROVES** FOG, TSS and BOD for cleaner **waste water** effluent

GreaseShot™...keeps your drains & grease trap flowing

GreaseShot™

PRODUCT INFORMATION



Formula Specifications

Guaranteed Minimum Bacterial Concentration
2 Billion CFU/ml

PRODUCT PROFILE

Applications

- Grease traps / Interceptors
- Kitchen drains (grease)
- Beverage lines (sugars)
- Lift Stations
- Collection Systems

Multiple *Bacillus* Species

- Naturally occurring, non-engineered
- Aerobes and facultative anaerobes
- Highly motile
- Positive chemotaxis
- 100% stabilized bacterial spores

Bacterial Enzyme Production

Amylase, Protease, Lipase, Esterase,
Urease, Cellulase, Xylanase

Appearance

Blue Liquid Formula

Effective pH Range

4.25 – 10.0

Effective Temperature Range

5°C – 55°C (40°F – 130°F)

Shelf Life

One year at 21°C (70°F)

STANDARD PACKAGING

Available in Concentrate:

22oz | 650ml - Conc.

33oz | 1-liter - Conc.

*add water for RTU mix

FOG FORMULA



Refill Pouch
3/box

STORAGE AND HANDLING

Store in a cool, dry location.

Do not freeze

Wash thoroughly with water
if exposed to skin or eyes

FORMULATION GUIDELINES (Liquid)

To refill system, lift reservoir from dock, rinse out & fill with water (about 2/3rd's full). THEN add bio treatment concentrate into reservoir. Top off, cap & swirl to mix. Then place reservoir back on dock.

Wall Mounted for HIGH
visibility level check and
operational ease to refill.



Automated Dosing Timer:

4-week, 2-week & 1-week

Refill interval schedules,
easy to adjust and set.



- GreaseShot operates with proprietary bio treatments to target multiple waste streams.
- Kit includes: bio-doser housing, reservoir, auto-timer, fittings & all necessary tubing.
- Installation instructions included for wall mount operation and timer settings of GreaseShot system.
- SDS sheets available upon request: info@earthbio.com

EarthBio
Technologies

Consult your **EarthBio** technical representative for dosing directions,
alternative formulations & additional applications, 888.855.1925

www.earthbio.com

© 2026 Ecotek, LLC. All Rights Reserved.

No part of this document may be used to support the sales or distribution of products not supplied by EarthBio